



(937) 554-4673 Office  
http://www.semantech-inc.com  
info@semantech-inc.com

## Corporate Solutions Capability Profile

Enterprise Strategy

Enterprise Integration

Enterprise Learning

### We're a Small company, with Big ideas...

Semantech Inc. is not the average IT consulting firm. We're different because we approach each engagement as both an opportunity for business as well as a chance to solve challenges from a unique perspective.

Our perspective is based upon an understanding that the best solutions have yet to be developed and that it is the duty of solution providers to maintain an open mind.

### Program Lifecycle Management

PLM is our core methodology for providing enterprise level integration and learning solutions.

We examined several areas where there seemed to be a great deal of logical symmetry; Program Management, Project Management, Product Lifecycle Management and Portfolio Management and developed a methodology that could combine and automate all of these within one solution.

Each element represents a Lifecycle of sorts and all of those lifecycles logically roll up into a single lifecycle which governs the entire enterprise. It can also be logically extended to any type of program that spans multiple enterprises. PLM is the Lifecycle of Lifecycles or "Master Lifecycle" which governs all the parts of the puzzle.

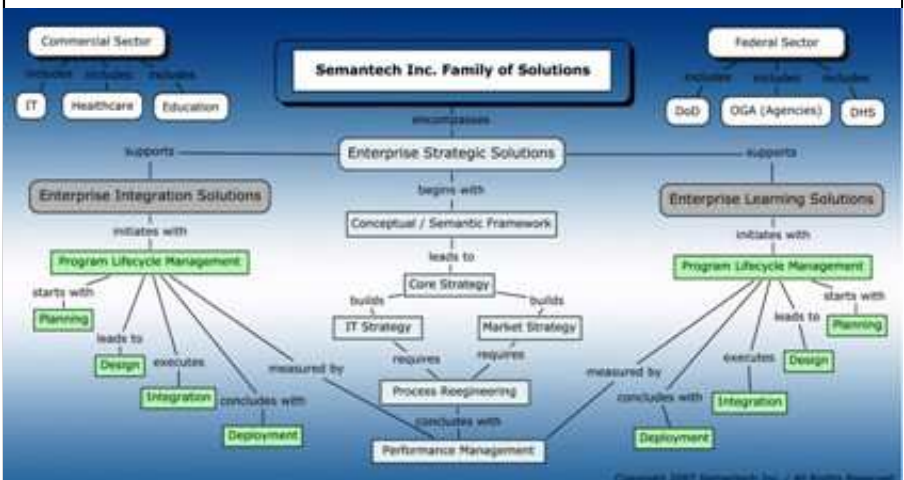
### About Semantech—Our History

Semantech Inc is a small, woman-owned, minority-owned business made up of consulting professionals who have had years of experience both in the private and federal sectors working with both large and small companies. It has been our experience that the smaller companies are universally more flexible and responsive. In most cases, smaller companies are more likely to take risks and try new approaches.

We feel at home within this type of atmosphere, and more importantly we feel confident that this corporate structure allows us to leverage our skills and knowledge to the greatest extent possible for our clients.

Semantech's solutions are designed to solve problems and have been built to respond to a diverse set of enterprise challenges. These solutions span the spectrum of both business and IT lifecycles are designed to help bridge the gap between the two. In our experience, while every enterprise is unique, most share a core group of challenges and more importantly, most enterprise share a certain set of expectations about what types of capability they need.

We have spent the past few years developing solutions to meet those shared challenges and expectations and are now prepared to tailor those solutions to your unique environment. At Semantech, our focus and primary offerings consist of enterprise solutions. We make a tangible distinction between solutions and services. Solutions in our view, represent pivotal work that results in the successful response to or closure of a specific problem or problems. A service on the other hand, in our view refers to the support of other solutions either in development or already deployed.



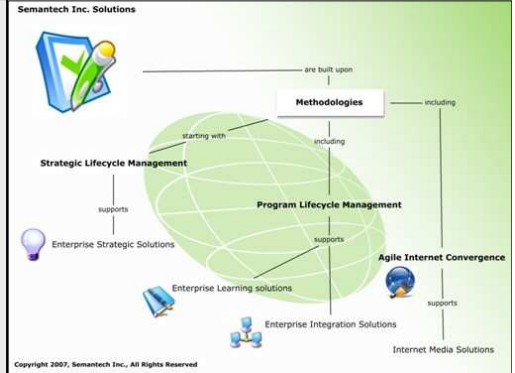
*Our world-class IT solutions support both Government and Industry.*



# Corporate Solutions Capability Profile

## Semantech Solutions Methodology Overview

Most consulting companies expend a good deal of effort highlighting their unique methodologies or adherence to industry-wide paradigms, but what does this really mean to you the client? Is one methodology more likely to succeed than another – does a company need to have a methodology at all in order to provide their solutions? The buzz about methodology in IT is seldom followed up with pragmatic explanations as to why certain approaches are used in certain situations. One thing we've learned over the years is that there isn't one approach that fits every situation. When we founded Semantech, we dedicated a significant amount of our start-up effort in determining which types of methodologies we would employ to support our preferred solutions.



Semantech's Spectrum of Solutions Offerings

### Enterprise Strategy

Everything starts with strategy. Your plans, your program and your performance will only be as good as the strategies behind them. Strategy is a broad area and covers many facets of the larger enterprise life-cycle; Semantech views strategy from two perspectives:

- The shared understanding that unites all participants and technologies – The Semantic Foundation & the core process – Strategic Lifecycle Management.

Our Strategic Lifecycle Management process is intentionally built with hooks into every other enterprise process. The goal is to achieve total strategic traceability from inception to completion across every enterprise initiative. Our Strategic Solutions can be applied to every industry and to any sized organization.

### Enterprise Integration

What's the difference between a solution integrator and systems integrator? Scope, context and ownership. We understand that integration encompasses much more than system interfaces; solution integration represents the fusion of process, data and Family of Systems (FoS) capabilities. Semantech provides the following capabilities and deliverables to integrate your entire solution:

Examples of our Capabilities	Examples of our Deliverables
Systems Analysis, Systems Engineering	Blueprint Phase (ERP) Reports / Webs
Requirements Engineering / Management	DoDAF, Zachman & FEA EA Products
Enterprise Architecture (DoDAF, FEA, Zachman)	SOA Transformation Blueprints
UML & Data modeling	UML models, data models, requirements docs

### Enterprise Learning

The founders of Semantech have been working with Learning Technology solutions for nearly 20 years. We have contracted with major universities, worked on Cisco's E-learning architecture team, been contributors to ASTD's E-learning Glossary and Learning Circuits magazine and ran one of the premier newsgroups dedicated to this market segment for three years – E-learning Leaders.

Examples of our Capabilities	Examples of our Deliverables
Learning Solution Strategy	Tailored Curriculums, Courseware
Content Development, Management, Integration	Podcasts & Instructional Videos
Learning Portal Design & Deployment	Quick Reference Charts & Guides
Curriculum Mapping & Automation	Certification Programs